

MONYA

INSTALLATION GUIDE

Ver.1.3



- This guide is a manual for the operation of multi-cryptocurrency wallet MONYA.
- Screens and operations may depend on the specification of device.
- Each setting for details or application is to be performed by each user.
- This guide may be modified without a notification beforehand.
- Owning and using cryptocurrency / virtual currency and associated applications is on one's own responsibility (The guide author and the developer of each system or app take no responsibility or liability).

The Relationship between Password and Secret Key of MONYA

The password and secret key (passphrase) are used to change the settings, transfer coin, restore the wallet.

Be sure to make a copy and store it where another person or software cannot see.



Inputting the password is required when sending your coin. Never forget the password or lose its copy.

It is available for one or more employees to use MONYA

because an illegal transaction is unavailable as long as both the password and the secret key (passphrase) are unknown for them.

Specification and Characteristics of MONYA

	iOS			Android		
	App	Safari	Chrome	App	Safari	Chrome
Invoice QR code creation	Yes	Yes	Yes	Yes	Yes	Yes
Camera to read code	-	Yes	-	Yes	-	-
Suggested operating environment	Safari			App		
Automatic conversion of invoice amount into MONA	Available					
Payment	Available for one or more employees					
Payment speed	Speedy					
Characteristics	* Wallet information can be shared with the app and browser versions.					
	* Anyone can start MONYA. Illegal transaction unavailable thanks to the password					
	* Suitable for a personal transaction					
	* Suitable for a business transaction					
	* Multi-cryptocurrency wallet					
	* Some functions are restricted in the iOS version.					

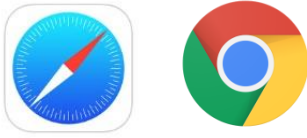
※ This table is on the basis of the operational test in May 2018 by the author. The specification may be modified without a notification beforehand.

※ Only some of the functions are restricted in the suggested environment. There is no problem to store your crypto asset temporarily.

“Secret Key” (described later) is shared among the web browser, Android app, and iOS app. Therefore, the wallet information among them is the same.

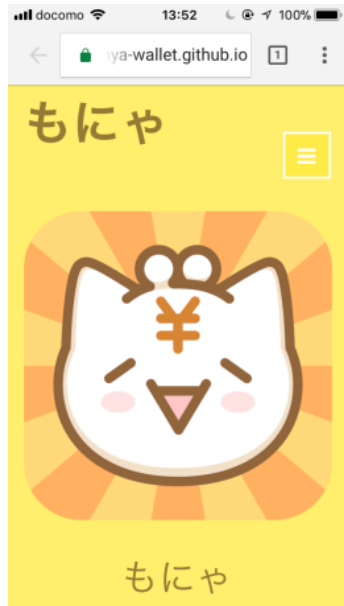


Installation of MONYA



Web browser version for Safari or Chrome

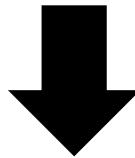
https://monya-wallet.github.io/index_en.html
Access to the MONYA official website.



↓ Scroll the screen and select the "BROWSER VERSION".



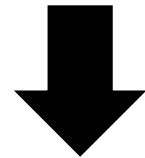
Search MONYA in Google Play.



Tap "Install".



Search MONYA in AppStore.



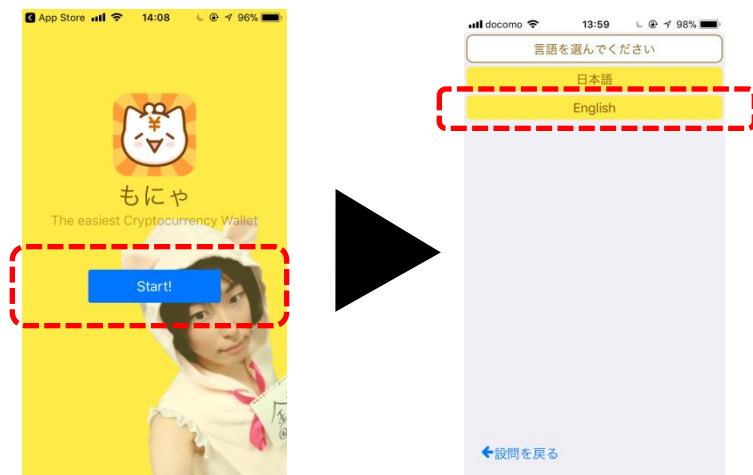
Tap "GET" to install MONYA.

Go to the MONYA initial setting page.

MONYA Initial Setting 1/3

- ※ The screens here are of the iOS version.
- ※ The screens may be different because of a specification change.

1. Open MONYA and click/tap the “Start” button. Then, select a language. (English is selected here.)



2. Several questions will be displayed. Read and answer each question carefully.

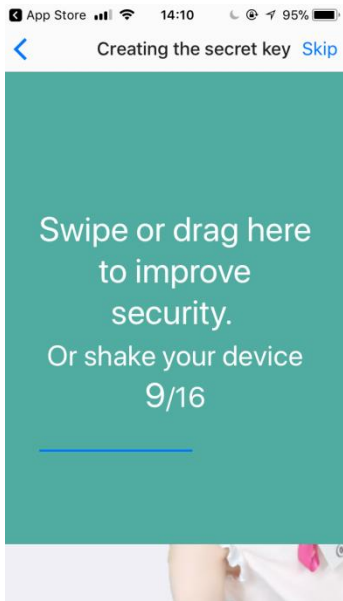


MONYA Initial Setting 2/3

3. The “Please Confirm” screen will be displayed. Carefully read and check the cautions about secret key. Then, select the number (12, 18, and 24) of secret key words. Click/tap the “Next” button.



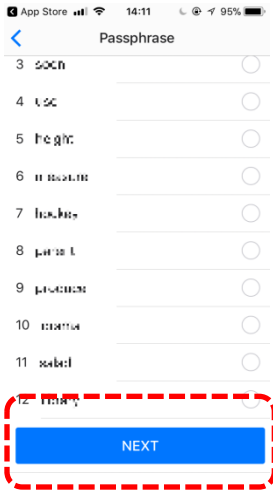
4. The screen below will be displayed during the secret key creation. Follow the instruction in it.



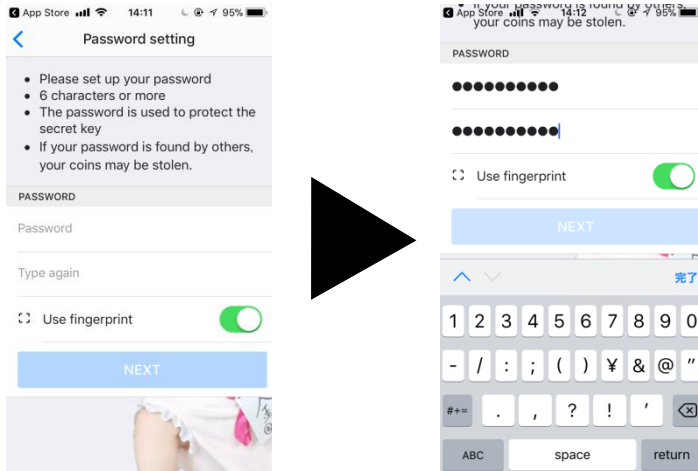
MONYA Initial Setting 3/3

5. Your secret key (passphrases) will be created.

Be sure to record the displayed words (passphrases). Then, tap the “Next” button.



6. Specify your password to start MONYA.



7. When the screen below is displayed, the initial setting is done.



【MEMO】

※Be sure to write your password and secret key (passphrases). They will be requested at app start and data restoration.

Password			
	()
Secret key			
1	()
2	()
3	()
4	()
5	()
6	()
7	()
8	()
9	()
10	()
11	()
12	()
13	()
14	()
15	()
16	()
17	()
18	()
19	()
20	()
21	()
22	()
23	()
24	()